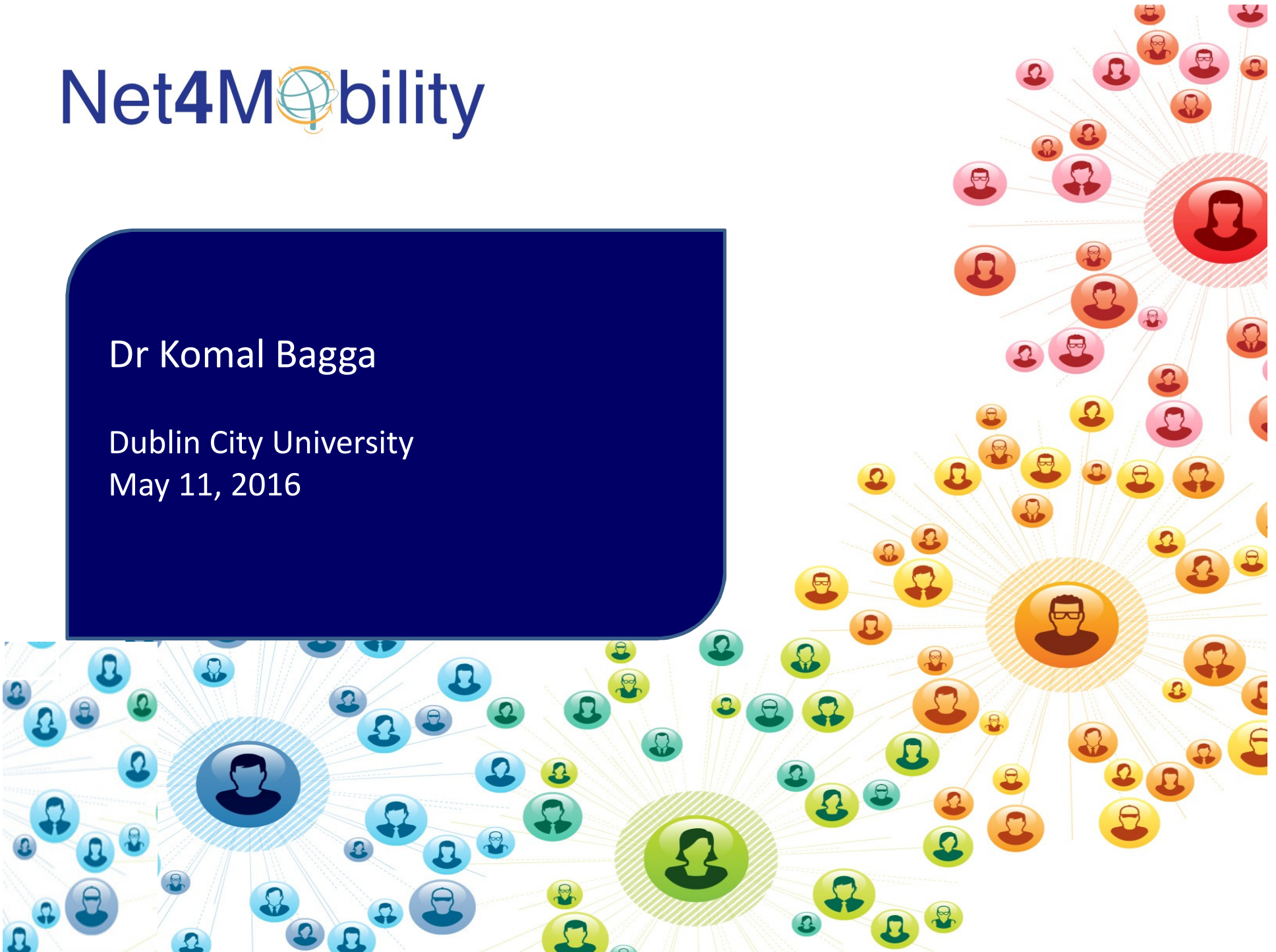


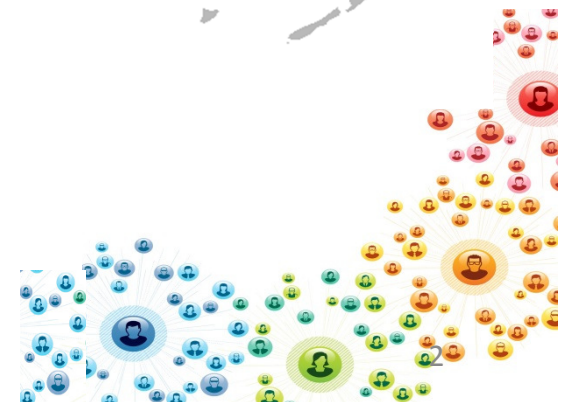
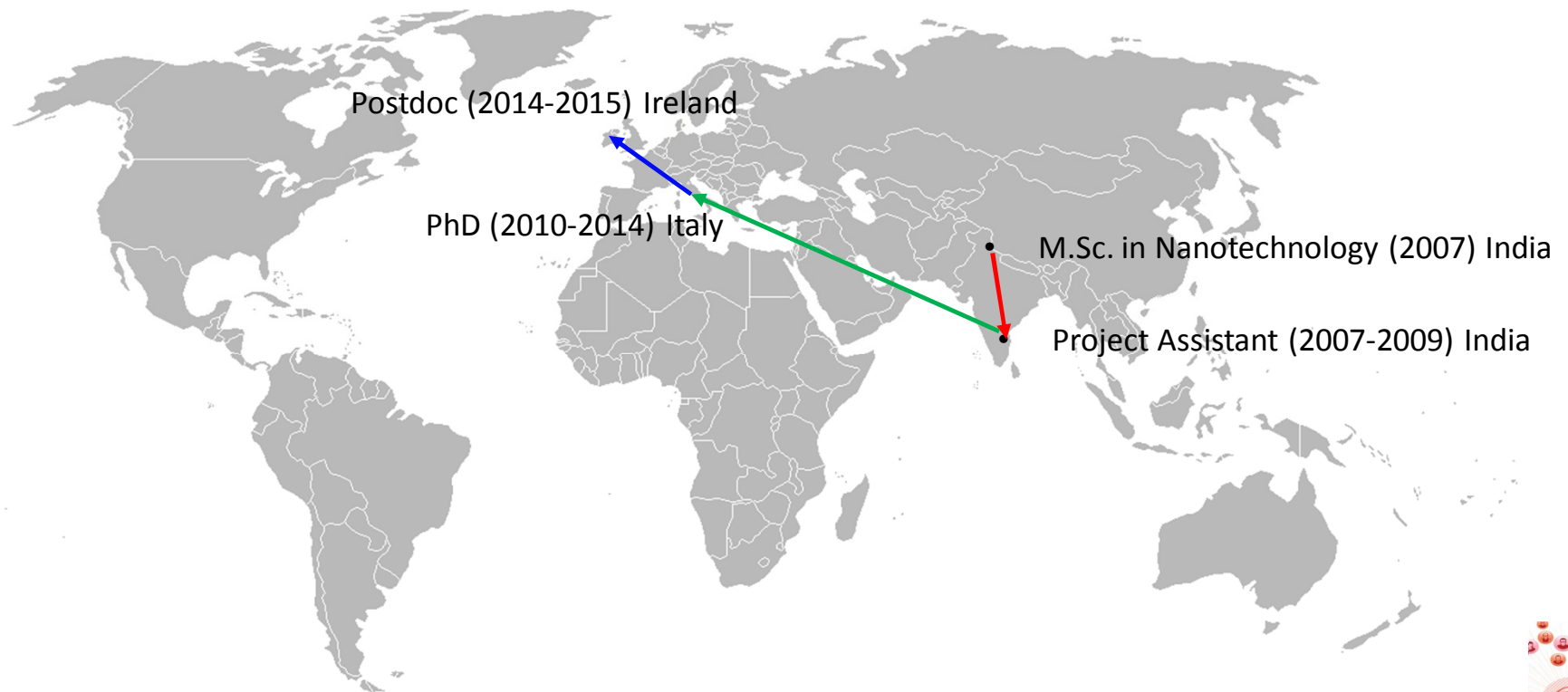
Net4Mobility

Dr Komal Bagga

Dublin City University
May 11, 2016



Research Career



Applying for Marie Curie fellowship

- Marie Curie Fellowship application Marie Curie Intra-European Fellowships (IEF) (unsuccessful) – 2013

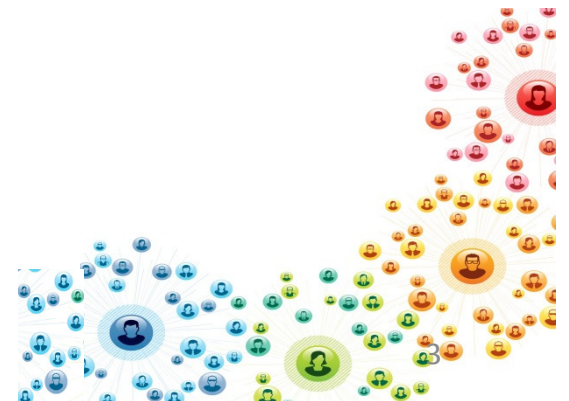
6 Journal publications, 2 conference publications, cumulative impact factor of 29.035

- Marie Curie Fellowship application (successful) -2014

7 Journal publications and 2 conference proceedings, cumulative impact factor of 33.626

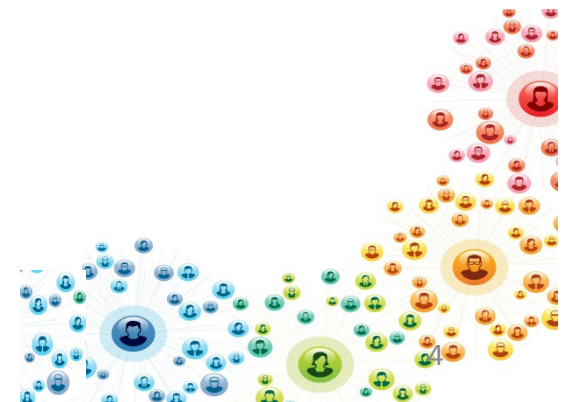
What I learnt from unsuccessful application

- Feedback
- Continuous interaction with the host institute



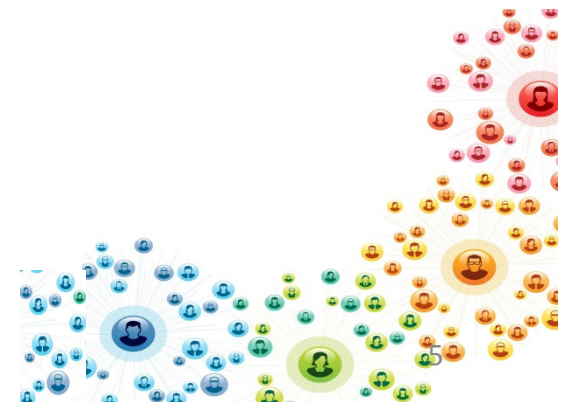
Key points/tips/tricks

- Start early
- Commitment
- Be ambitious, think big
- Think like one of them- why should you get tax payers money
- Don't be shy in claiming how good researcher you are!
- **Feedback loop**



Being a Marie curie fellow

- Connections/networking- future employment
- Training courses- research and management
- Being part of career development framework in DCU



Thank you

